

2026 HOME OPENER · GE VERNOVA PARK

GRAND OPENING PLAN

Greenville Triumph SC vs Forward Madison FC

Tuesday, June 3, 2026 · 7:36 PM Kickoff · GE Vernova Park, Simpsonville SC

PRESENTED BY **GE VERNOVA**

The Greenville Triumph SC **2026 Home Opener**, presented by **GE Vernova**, marks the grand opening of **GE Vernova Park** in Mauldin. Gates open at **6:00 PM** for a full evening of soccer, community and celebration, with the Triumph hosting Forward Madison FC at **7:36 PM** and a **post-match fireworks show** to close the night.

Before kickoff, fans gather at the **Pitchside Social at BridgeWay Plaza** and the **Kid's Zone on BridgeWay Green**, with a player walkout, autographs, a Chinook flyover from the SC National Guard, and activations from our community and corporate partners.

AT A GLANCE

GATES OPEN

6:00 PM

NE Gate & East Gate

KICKOFF

7:36 PM

vs. Forward Madison

FAN FEST OPENS

4:30 PM

BridgeWay Plaza & Green

POST-MATCH

Fireworks Show

~3 min after final whistle

PREGAME

Chinook Flyover

SC National Guard · 7:32 PM

EST. ATTENDANCE

1,300-1,500

\$5 tickets

EVENT DETAILS

Match	Triumph vs. Forward Madison FC
Date	Tuesday, June 3, 2026 · 7:36 PM
Venue	GE Vernova Park · 825 Bridgeway Blvd, Simpsonville
Presenting Partner	GE Vernova

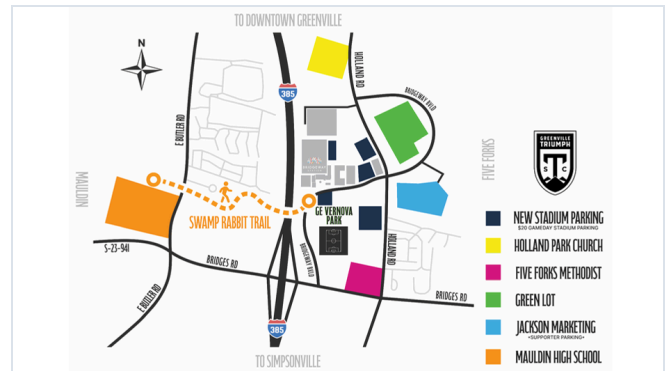
8:00 AM	Mauldin High School parking opens Employee & vendor parking · shuttle staging	7:26 PM	Player walkout
3:00 PM	Shuttle service begins from Mauldin High	7:29 PM	Honor Guard, Mauldin HS Jr. ROTC
4:00 PM	Satellite lots & ticket office open ADA shuttle begins	7:30 PM	US National Anthem
4:30 PM	Fan Fest opens, Pitchside Social & Kid's Zone	7:32 PM	Chinook flyover, SC National Guard
5:50 PM	Players walk to the stage & are presented	7:36 PM	Kickoff
6:00 PM	Gates open to the public NE & East Gate · autograph session	~8:21 PM	Halftime
6:15 PM	Supporters march through Videoboard entrance	~8:36 PM	Second half begins
6:35 PM	Warm-ups begin	Post-Match	Fireworks, autographs & picture on the pitch Fireworks ~3 min after final whistle
7:00 PM	Fan Fest closes	+60 min	Shuttles run until 1 hour after final whistle

LOT	PRICE
New Stadium Parking - gameday stadium lot	\$20
Green Lot	\$15
Five Forks Methodist - home team & officials	\$15
Holland Park Church	\$10
Mauldin High School - staff, vendors & shuttle	\$10
Jackson Marketing - supporter parking	-

TRANSPORTATION

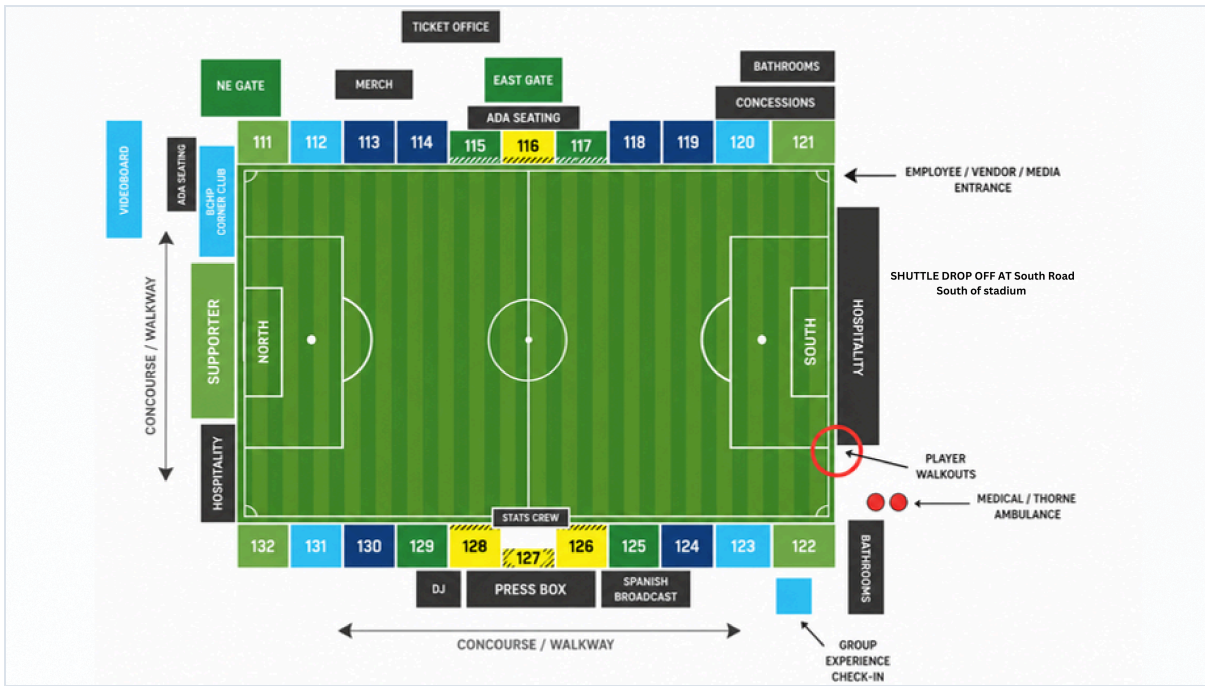
Lot Hours	Mauldin High 3 PM · others 4 PM
Shuttle	Mauldin High → stadium, from 3 PM
ADA Shuttle	All satellite lots, from 4 PM
Walk / Bike	Swamp Rabbit Trail
Visiting Buses	Via Corsa Ave, south of stadium

Parking Map



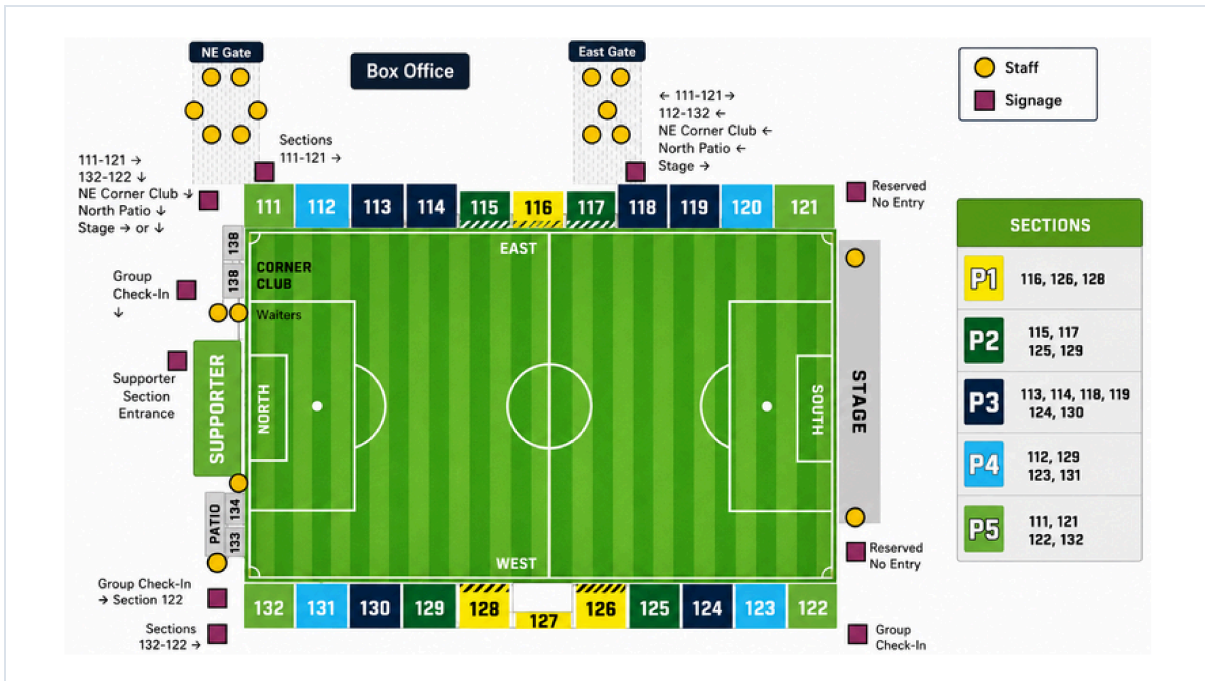
Six lots serve GE Vernova Park, connected by shuttle and the Swamp Rabbit Trail. New Stadium Parking is the closest gameday lot; supporters park at Jackson Marketing.

Seating, Gates & Field

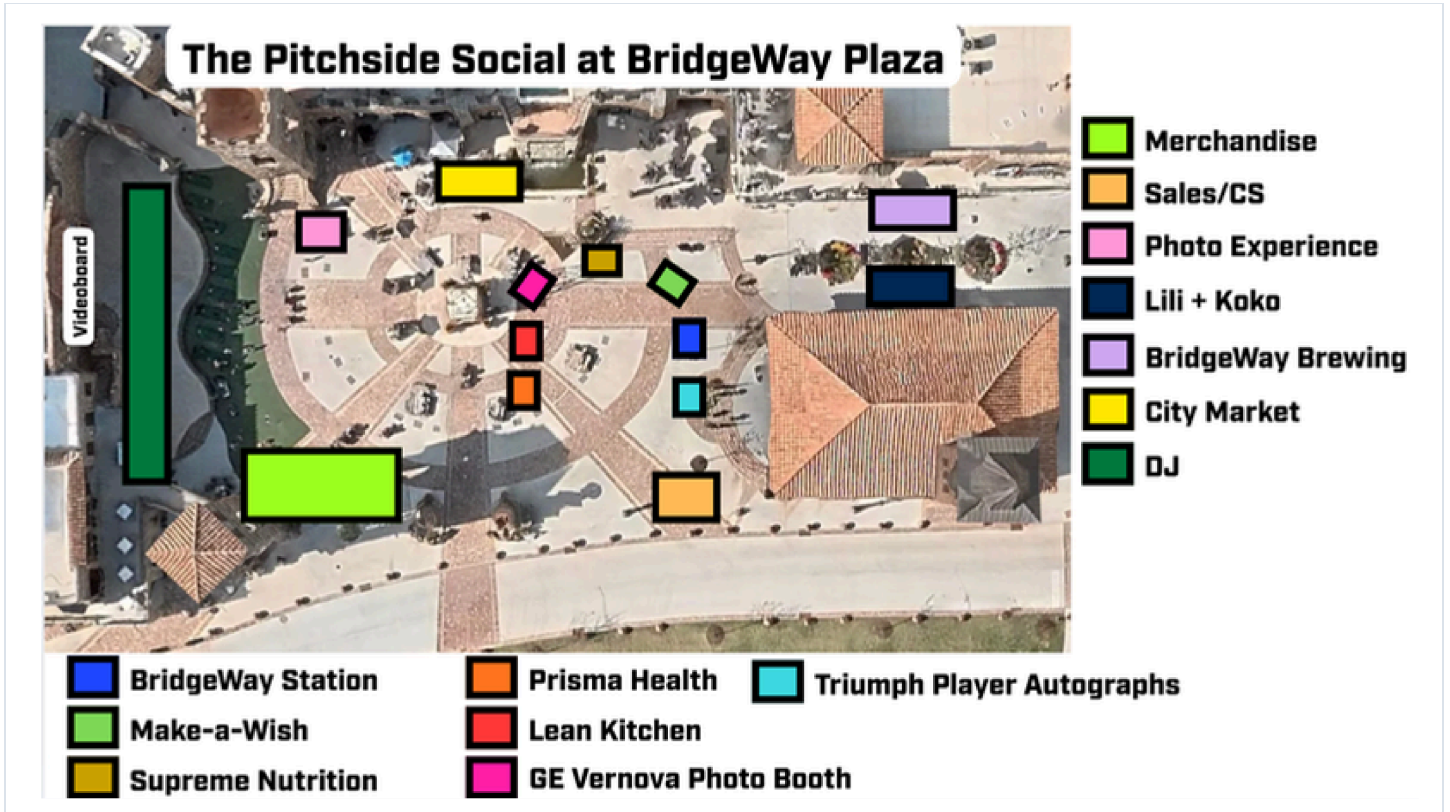


Sections 111-132, ADA seating, NE & East gates, hospitality areas and the shuttle drop-off at South Road.

Sections, Entry & Parking-Pass Map



Section-to-gate flow, supporter and patio entrances, and the P1-P5 parking-pass section groupings.



A pregame social on BridgeWay Plaza with food, drink, music and partner activations, including the Legacy of Champions photo experience (USL League trophy, finalist plates, World Cup trophy & Golden Ball).

PLAZA ACTIVATIONS

Make-a-Wish Foundation

Prisma Health

GE Vernova

Photo booth

BridgeWay Station

BridgeWay Brewing

City Market · Lili + Koko

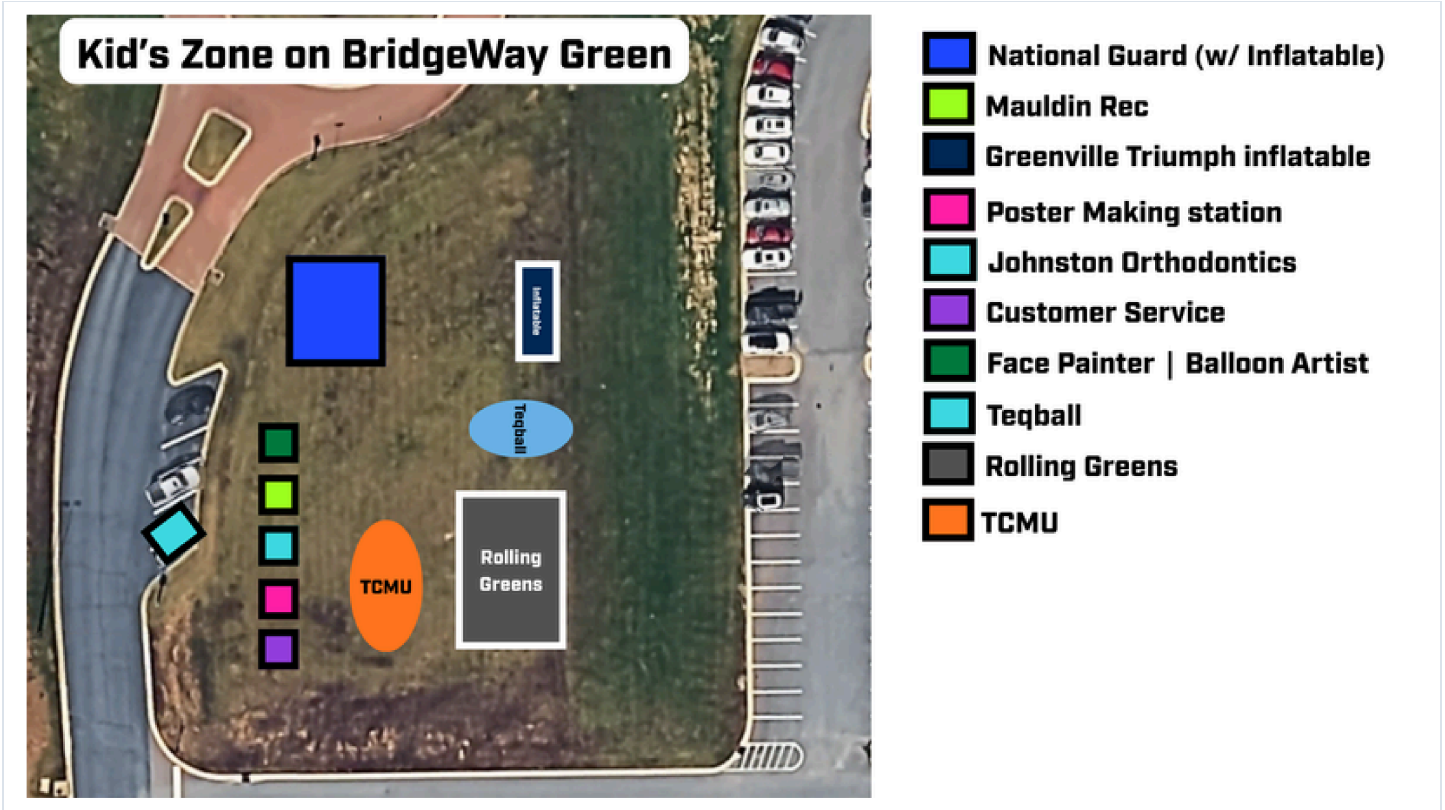
Lean Kitchen

Samples

Supreme Nutrition

Triumph Player Autographs

Legacy of Champions Photo Exp.



A family zone on the Green with inflatables, games and hands-on activities for younger supporters.

ACTIVATIONS

- National Guard Inflatable

- Greenville Triumph Inflatable

- Children's Museum of the Upstate

- Mauldin Rec

- Teqball

- Rolling Greens

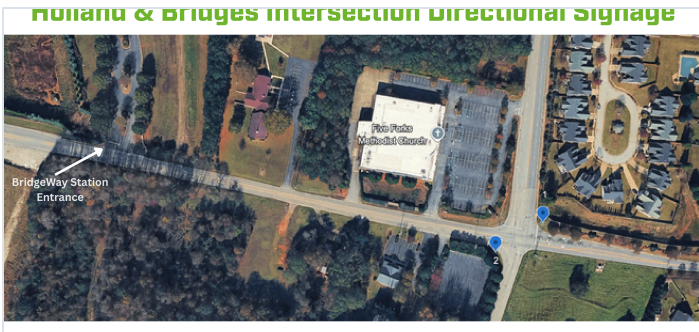
- Face Painter / Balloon Artist

- Poster Making Station

- Johnston Orthodontics

- Customer Service

Holland & Bridges Intersection



Holland & BridgeWay Blvd



Mauldin GateWay Bridge



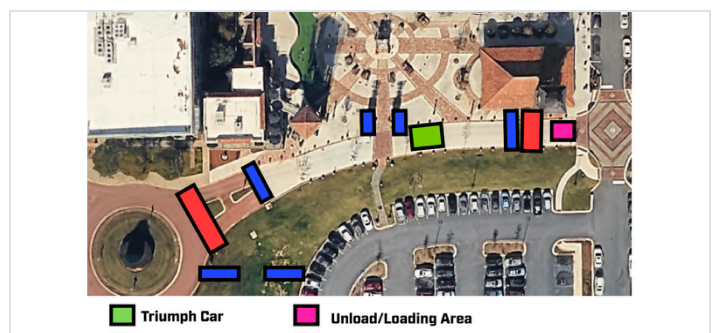
Butler & Mauldin High Entrance



Butler Rd & Holland Intersection



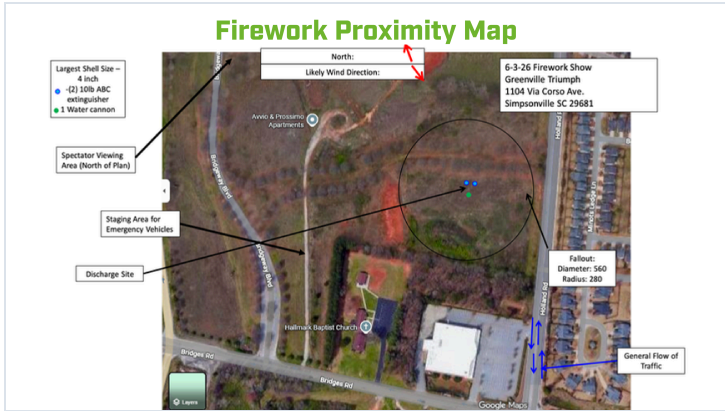
Plaza Setup, Car, Road & Bike Racks



Blue placemarks indicate directional-signage locations guiding fans from each approach to GE Vernova Park.

A professional fireworks show by **Pioneer Pyrotechnics** closes the Home Opener, beginning roughly three minutes after the final whistle.

Proximity & Safety Map



SAFETY SUMMARY

Largest Shell	4 inch
Fallout Diameter	560 ft (280 ft radius)
Discharge Site	North of the stadium
Spectator Viewing	North of discharge plan
On-Site Safety	2× 10 lb ABC + water cannon
EMS Staging	Dedicated staging area

Discharge site, fallout radius, spectator viewing area, emergency-vehicle staging and general traffic flow are shown on the proximity map.

WITH THANKS TO
OUR PARTNERS



The 2026 Home Opener is made possible by our presenting partner **GE Vernova** and the City of Mauldin, alongside the community and corporate partners joining us at GE Vernova Park.

- GE Vernova
- City of Mauldin
- BridgeWay Station
- Prisma Health
- Make-a-Wish Foundation
- ScanSource
- EDIFICE Construction
- Dodge Industrial
- Cristina Ortiz State Farm
- Lean Kitchen
- Supreme Nutrition
- Johnston Orthodontics
- Children's Museum of the Upstate
- SC National Guard
- Rolling Greens
- Maplebrook Terrace
- Tanner's Mill

SEE YOU AT
GE VERNOVA PARK.